

# USB Cable Installation Guide

UG344 (v2.0) March 6, 2008





Xilinx is disclosing this Document and Intellectual Property (hereinafter “the Design”) to you for use in the development of designs to operate on, or interface with Xilinx FPGAs. Except as stated herein, none of the Design may be copied, reproduced, distributed, republished, downloaded, displayed, posted, or transmitted in any form or by any means including, but not limited to, electronic, mechanical, photocopying, recording, or otherwise, without the prior written consent of Xilinx. Any unauthorized use of the Design may violate copyright laws, trademark laws, the laws of privacy and publicity, and communications regulations and statutes.

Xilinx does not assume any liability arising out of the application or use of the Design; nor does Xilinx convey any license under its patents, copyrights, or any rights of others. You are responsible for obtaining any rights you may require for your use or implementation of the Design. Xilinx reserves the right to make changes, at any time, to the Design as deemed desirable in the sole discretion of Xilinx. Xilinx assumes no obligation to correct any errors contained herein or to advise you of any correction if such be made. Xilinx will not assume any liability for the accuracy or correctness of any engineering or technical support or assistance provided to you in connection with the Design.

THE DESIGN IS PROVIDED “AS IS” WITH ALL FAULTS, AND THE ENTIRE RISK AS TO ITS FUNCTION AND IMPLEMENTATION IS WITH YOU. YOU ACKNOWLEDGE AND AGREE THAT YOU HAVE NOT RELIED ON ANY ORAL OR WRITTEN INFORMATION OR ADVICE, WHETHER GIVEN BY XILINX, OR ITS AGENTS OR EMPLOYEES. XILINX MAKES NO OTHER WARRANTIES, WHETHER EXPRESS, IMPLIED, OR STATUTORY, REGARDING THE DESIGN, INCLUDING ANY WARRANTIES OF MERCHANTABILITY, FITNESS FOR A PARTICULAR PURPOSE, TITLE, AND NONINFRINGEMENT OF THIRD-PARTY RIGHTS.

IN NO EVENT WILL XILINX BE LIABLE FOR ANY CONSEQUENTIAL, INDIRECT, EXEMPLARY, SPECIAL, OR INCIDENTAL DAMAGES, INCLUDING ANY LOST DATA AND LOST PROFITS, ARISING FROM OR RELATING TO YOUR USE OF THE DESIGN, EVEN IF YOU HAVE BEEN ADVISED OF THE POSSIBILITY OF SUCH DAMAGES. THE TOTAL CUMULATIVE LIABILITY OF XILINX IN CONNECTION WITH YOUR USE OF THE DESIGN, WHETHER IN CONTRACT OR TORT OR OTHERWISE, WILL IN NO EVENT EXCEED THE AMOUNT OF FEES PAID BY YOU TO XILINX HEREUNDER FOR USE OF THE DESIGN. YOU ACKNOWLEDGE THAT THE FEES, IF ANY, REFLECT THE ALLOCATION OF RISK SET FORTH IN THIS AGREEMENT AND THAT XILINX WOULD NOT MAKE AVAILABLE THE DESIGN TO YOU WITHOUT THESE LIMITATIONS OF LIABILITY.

The Design is not designed or intended for use in the development of on-line control equipment in hazardous environments requiring fail-safe controls, such as in the operation of nuclear facilities, aircraft navigation or communications systems, air traffic control, life support, or weapons systems (“High-Risk Applications”). Xilinx specifically disclaims any express or implied warranties of fitness for such High-Risk Applications. You represent that use of the Design in such High-Risk Applications is fully at your risk.

©2007–2008 Xilinx, Inc. All rights reserved. XILINX, the Xilinx logo, and other designated brands included herein are trademarks of Xilinx, Inc. All other trademarks are the property of their respective owners.

## Revision History

The following table shows the revision history for this document.

Date	Version	Revision
02/02/07	1.0	Initial Xilinx release.
03/06/08	2.0	<ul style="list-style-type: none"><li>• Added support for Platform Cable USB II (DLC10).</li><li>• Added support for Windows Vista.</li><li>• Added <a href="#">Figure 1-2, page 10</a> and <a href="#">Figure 1-3, page 11</a> to address Windows Vista security dialog boxes.</li><li>• Updated “<a href="#">Step 4: Determine Installation Flow,</a>” <a href="#">page 12</a> for Linux operating systems.</li><li>• Simplified “<a href="#">Step 5: Install the Xilinx USB Cable,</a>” <a href="#">page 15</a> for Windows operating systems.</li><li>• Updated download links for Windows and Linux cable driver installers.</li><li>• Updated document template.</li><li>• Numerous minor edits to enhancements clarity.</li></ul>

# Table of Contents

---

## Preface: About This Guide

Guide Contents .....	5
Additional Documentation .....	5
Additional Resources .....	6
Supported Xilinx Software and Operating Systems .....	6
Conventions .....	7
Typographical .....	7
Online Document .....	8

## Chapter 1: Installing Xilinx USB Cables

Step 1: Install ISE or WebPACK Software and USB Cable Drivers .....	9
Step 2: Find the Cable Model .....	11
Step 3: Find the ISE or WebPACK Software Version .....	12
Step 4: Determine Installation Flow .....	12
For Windows XP Professional or 2000 Professional .....	12
For Windows Vista .....	13
For Red Hat Enterprise Linux WS or SUSE Linux Enterprise .....	14
Step 5: Install the Xilinx USB Cable .....	15
On All Windows Operating Systems .....	15
On All Linux Operating Systems .....	15

## Chapter 2: Found New Hardware Wizard

Running the New Hardware Wizard (Windows XP Professional Only) .....	17
--	----

## Appendix A: Known Issues

Windows Found New Hardware Messages .....	21
'Wizard Cannot Install this Hardware' .....	21



## About This Guide

---

This guide explains how to install the Xilinx family of USB programming cables, including information related to installing Xilinx USB cables with the Xilinx Integrated Software Environment (ISE™) and Xilinx WebPACK™ software.

### Guide Contents

This manual contains the following chapters:

- [Chapter 1, “Installing Xilinx USB Cables,”](#) provides step-by-step installation procedure.
- [Chapter 2, “Found New Hardware Wizard,”](#) explains installation via this wizard.
- [Appendix A, “Known Issues,”](#) covers known issues that can occur during the installation procedure.

### Additional Documentation

1. [DS593, Platform Cable USB II Data Sheet](#)  
This data sheet provides a complete description of the Platform Cable USB II hardware, including operation and electrical characteristics.
2. [DS300, Platform Cable USB Data Sheet](#)  
This data sheet provides a complete description of the Platform Cable USB hardware, including operation and electrical characteristics.
3. [Platform Cable USB Frequently Asked Questions \(FAQ\)](#)  
This FAQ contains supplemental information for the Platform Cable USB.
4. ISE Software Manual  
The ISE software manuals provide software installation instructions, pointers to additional online documentation and listings of known issues. Xilinx maintains a collection of current and older manuals at:  
[http://www.xilinx.com/support/software\\_manuals.htm](http://www.xilinx.com/support/software_manuals.htm).
5. [WebPACK Frequently Asked Questions \(FAQ\)](#)  
This FAQ contains WebPACK-specific information supplementing the *ISE Software Manual*. This FAQ includes additional software download and installation information, as well as WebPACK device and feature support.

To find additional documentation, see the Xilinx website at:

<http://www.xilinx.com/literature>.

## Additional Resources

For USB cable installation issues not covered in this guide, consult Xilinx's interactive *Configuration Problem Solver* at:

<http://www.xilinx.com/support/troubleshoot/psolvers.htm>

To search the answer database of silicon, software, and IP questions and answers, or to create a technical support WebCase, see the Xilinx website at:

<http://www.xilinx.com/support>.

## Supported Xilinx Software and Operating Systems

Xilinx Integrated Software Environment (ISE) Foundation™ or Xilinx ISE WebPACK software must be installed on a supported operating system before any Xilinx USB cable can be used. The following table lists operating system and Xilinx software combinations that can be used with Xilinx USB cables.

*Table 1-1: Supported Operating Systems and ISE/WebPACK Versions*

Operating System	ISE or WebPACK Versions
Windows 2000 Professional SP4	6.3.03i or later
Windows XP Professional 32-bit	6.3.03i or later
Windows XP Professional 64-bit	9.1i or later
Windows Vista 32 and 64-bit	9.2 or later
Red Hat Enterprise Linux WS 3.0 32-bit	7.1i or later
Red Hat Enterprise Linux WS 3.0 64-bit	9.1i or later
Red Hat Enterprise Linux WS 4.0 32-bit	8.2i or later
Red Hat Enterprise Linux WS 4.0 64-bit	9.1i or later
Red Hat Enterprise Linux WS 5.0 32-bit and 64-bit	9.2i or later
SUSE Linux Enterprise 10.0 32 and 64-bit	10.1 or later

### Notes:

1. The operating systems supported by Xilinx USB cables are a sub-set of the operating systems supported by the ISE or WebPACK software.
2. WebPACK software is a free application available on the Xilinx ISE CD/DVD or for download at [http://www.xilinx.com/ise/logic\\_design\\_prod/webpack.htm](http://www.xilinx.com/ise/logic_design_prod/webpack.htm).

# Conventions

This document uses the following conventions. An example illustrates each convention.

## Typographical

The following typographical conventions are used in this document:

Convention	Meaning or Use	Example
Courier font	Messages, prompts, and program files that the system displays	<code>speed grade: - 100</code>
<b>Courier bold</b>	Literal commands that you enter in a syntactical statement	<b>ngdbuild</b> <i>design_name</i>
<b>Helvetica bold</b>	Commands that you select from a menu	<b>File</b> → <b>Open</b>
	Keyboard shortcuts	<b>Ctrl+C</b>
Italic font	Variables in a syntax statement for which you must supply values	<b>ngdbuild</b> <i>design_name</i>
	References to other manuals	See the <i>Development System Reference Guide</i> for more information.
	Emphasis in text	If a wire is drawn so that it overlaps the pin of a symbol, the two nets are <i>not</i> connected.
Square brackets [ ]	An optional entry or parameter. However, in bus specifications, such as <b>bus [7:0]</b> , they are required.	<b>ngdbuild</b> [ <i>option_name</i> ] <i>design_name</i>
Braces { }	A list of items from which you must choose one or more	<b>lowpwr = {on off}</b>
Vertical bar	Separates items in a list of choices	<b>lowpwr = {on off}</b>
Vertical ellipsis . . . . .	Repetitive material that has been omitted	IOB #1: Name = QOUT' IOB #2: Name = CLKIN' . . . .
Horizontal ellipsis ...	Repetitive material that has been omitted	<b>allow block</b> <i>block_name loc1 loc2 ... locn;</i>

## Online Document

The following conventions are used in this document:

Convention	Meaning or Use	Example
Blue text	Cross-reference link to a location in the current document	See the section “ <a href="#">Additional Resources</a> ” for details. Refer to “ <a href="#">Title Formats</a> ” in <a href="#">Chapter 1</a> for details.
Red text	Cross-reference link to a location in another document	See <a href="#">Figure 2-5</a> in the <i>Virtex-II Platform FPGA User Guide</i> .
<a href="#">Blue, underlined text</a>	Hyperlink to a website (URL)	Go to <a href="http://www.xilinx.com">http://www.xilinx.com</a> for the latest speed files.



# Installing Xilinx USB Cables

---

Proprietary device drivers must be installed to allow Xilinx Integrated Software Environment (ISE™) and Xilinx WebPACK™ software (for example, iMPACT) to communicate with Xilinx USB cables. Installation flows can differ depending on:

- USB cable model
- ISE or WebPACK software version
- PC operating system

In general, a complete USB cable installation is performed automatically when the latest ISE or WebPACK software is installed. However, additional actions may be necessary if, for example, the cable is to be installed on a Linux operating system. Another example is if Platform Cable USB II (Model DLC10) is to be used with ISE or WebPACK software versions prior to 10.1.

This chapter is organized to provide the user with a step-by-step and system-specific procedure for installing Xilinx USB cables. There are five steps required for installation:

[Step 1: Install ISE or WebPACK Software and USB Cable Drivers](#)

[Step 2: Find the Cable Model](#)

[Step 3: Find the ISE or WebPACK Software Version](#)

[Step 4: Determine Installation Flow](#)

[Step 5: Install the Xilinx USB Cable](#)

It is highly recommended that the user start with [Step 1: Install ISE or WebPACK Software and USB Cable Drivers](#) and follow the procedure in order.

## Step 1: Install ISE or WebPACK Software and USB Cable Drivers

1. Install the ISE or WebPACK software. Refer to the appropriate ISE installation guide or WebPACK software FAQ (refer to [“Additional Documentation”](#) in [“About This Guide”](#)).
2. During Xilinx ISE or WebPACK software installation, confirm that the cable drivers are selected ([Figure 1-1](#)) to insure that the drivers are copied from the installation media to the target system.

**Note:** Cable drivers are not selected by default for Linux versions of ISE and WebPACK software. The window shown in [Figure 1-1](#) does not appear when installing **WebPACK - Lab Install (Programming Tools Only)**. The cable drivers are installed automatically with this application.

**Note:** The window shown in [Figure 1-1](#) can vary for different ISE releases.

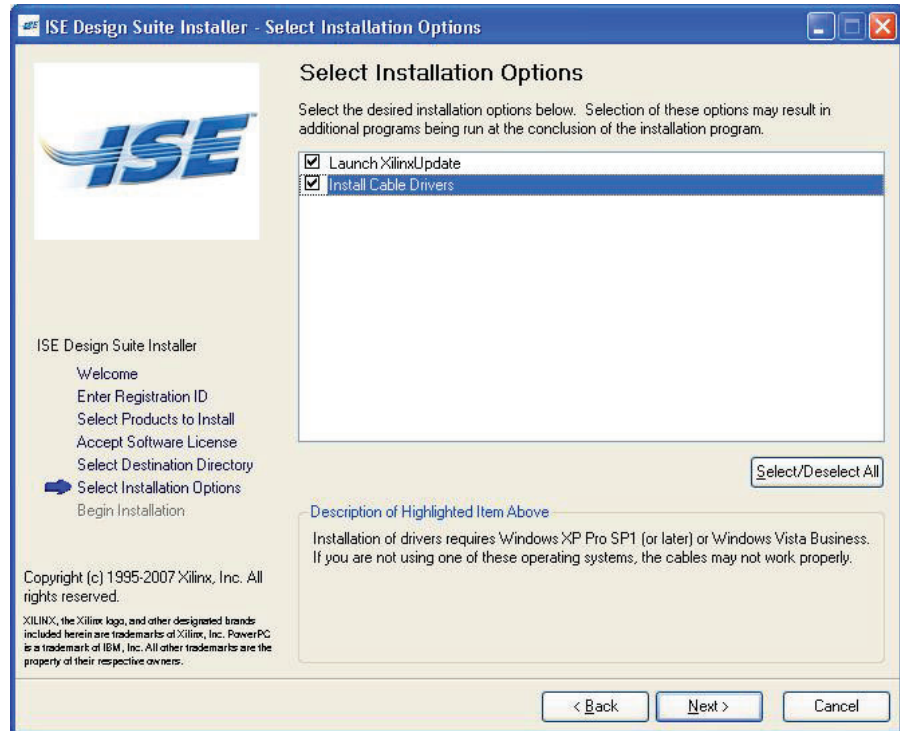


Figure 1-1: ISE 10.1 Design Suite Installer

- (Windows Vista only) During installation, two Windows Security dialog boxes may appear: one for the Jungo driver (Figure 1-2) and one for Xilinx cable driver (Figure 1-3). In both instances, check the box next to **Always trust software from "XXXX"** and then click **Install**.



Figure 1-2: Windows Security Dialog Box for the Jungo Driver (Windows Vista Only)

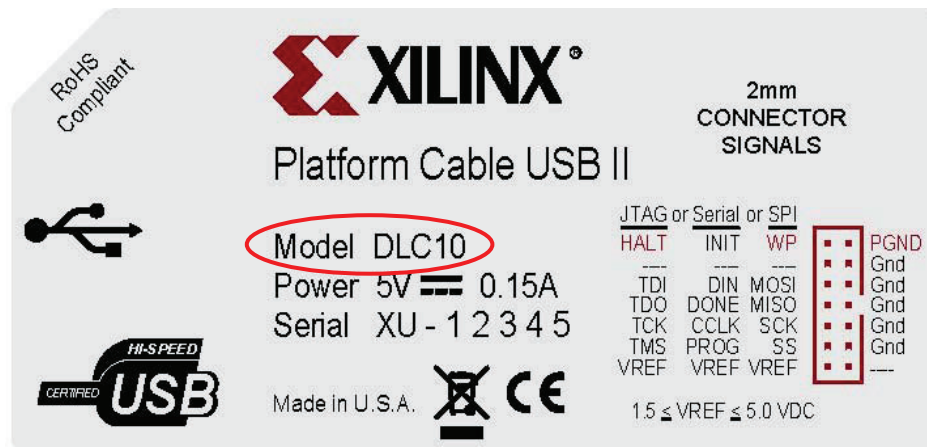


UG344\_C01\_03\_021708

Figure 1-3: Windows Security Dialog Box for the Xilinx Cable Driver (Windows Vista Only)

## Step 2: Find the Cable Model

1. Find and record the model number of the USB cable. The model number is printed on the label attached to the cable's case (Figure 1-4). Table 1-1 shows a complete list of Xilinx USB cable models.



UG344\_C01\_02\_030508

Figure 1-4: Model Number on a USB Cable

Table 1-1: Xilinx USB Cables

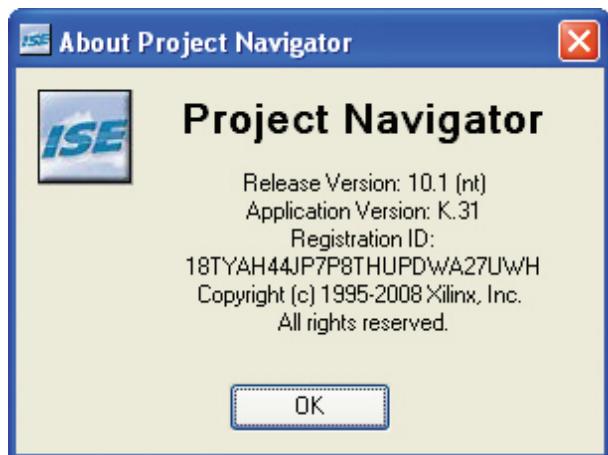
Name	Model
Platform Cable USB II	DLC10
Platform Cable USB	DLC9G
Platform Cable USB	DLC9LP
Platform Cable USB	DLC9

2. Proceed to “Step 3: Find the ISE or WebPACK Software Version.”

## Step 3: Find the ISE or WebPACK Software Version

Find and record the ISE or WebPACK software version installed on the host system. Version information can be found using the Project Navigator or iMPACT GUI:

1. Launch the Xilinx ISE Project Navigator or iMPACT.
2. From the pull down menus near the top of the GUI, select **Help**.
3. Select **About...**
4. A dialog box similar to [Figure 1-5](#) appears. Record the release version.
5. Proceed to “[Step 4: Determine Installation Flow](#).”



UG344\_C01\_03\_022808

Figure 1-5: Finding the ISE Version

## Step 4: Determine Installation Flow

After determining the cable's model number and ISE or WebPACK software version, select the installation flow based on the host PC's operating system.

### For Windows XP Professional or 2000 Professional

#### For model DLC10

For ISE or WebPACK software version:

- 10.1 or later:

Cable installation was completed during ISE or WebPACK software installation. No further actions are required.

- 6.3.03i through 9.2.04i:

Proceed to “[Step 5: Install the Xilinx USB Cable](#).”

**Note:** Xilinx recommends updating to the latest ISE or WebPACK software version to obtain current USB cable enhancements and fixes.

- 6.3.02i or earlier:

Xilinx USB cables are not supported. Upgrade to a supported ISE or WebPACK software version and then return to this step.

## For model DLC9LP or DLC9G

For ISE or WebPACK software version:

- 8.2i or later:  
Cable installation was completed during ISE or WebPACK software installation. No further actions are required.
- 6.3.03i through 8.1.03i:  
Proceed to [“Step 5: Install the Xilinx USB Cable.”](#)  
**Note:** Xilinx recommends updating to the latest ISE or WebPACK software version to obtain current USB cable enhancements and fixes.
- 6.3.02i or earlier:  
Xilinx USB cables are not supported. Upgrade to a supported ISE or WebPACK software version and then return to this step.

## For Model DLC9

For ISE or WebPACK software version:

- 7.1i or later:  
Cable installation was completed during ISE or WebPACK software installation. No further actions are required.
- 6.3.03i (only):  
Proceed to [“Step 5: Install the Xilinx USB Cable.”](#)  
**Note:** Xilinx recommends updating to the latest ISE or WebPACK software version to obtain current USB cable enhancements and fixes.
- 6.3.02i or earlier:  
Xilinx USB cables are not supported. Upgrade to a supported ISE or WebPACK software version and then return to this step.

## For Windows Vista

### For model DLC10

For ISE or WebPACK software version:

- 10.1 or later:  
Cable installation was completed during ISE or WebPACK software installation. No further actions are required.
- 9.2i through 9.2.04i:  
Proceed to [“Step 5: Install the Xilinx USB Cable.”](#)  
**Note:** Xilinx recommends updating to the latest ISE or WebPACK software version to obtain current USB cable enhancements and fixes.
- 9.1.03i or earlier:  
ISE and WebPACK software versions prior to 9.2i are not supported on Windows Vista. Upgrade to a supported ISE or WebPACK software version and then return to this step.

## For model DLC9LP, DLC9G or DLC9

For ISE or WebPACK software version:

- 9.2i or later:  
Cable installation was completed during ISE or WebPACK software installation. No further actions are required.
- 9.1.03i or earlier:  
ISE and WebPACK software versions prior to 9.2i are not supported on Windows Vista. Upgrade to a supported ISE or WebPACK software version and then return to this step.

## For Red Hat Enterprise Linux WS or SUSE Linux Enterprise

### For Model DLC10

For ISE or WebPACK software version:

- 10.1 or later:  
Use [Table 1-1, page 11](#) to verify that the Linux operating system installed on the host supports Xilinx USB cables. If USB cables are supported, then cable installation was completed during the ISE or WebPACK software installation and no further actions are required. Otherwise, upgrade to a supported Linux operating system and re-install the Xilinx design tool to complete the installation.
- 7.1i through 9.2.04i:  
Use [Table 1-1](#) to verify that the Linux operating system installed on the host supports Xilinx USB cables. If USB cables are supported, then proceed to “[Step 5: Install the Xilinx USB Cable.](#)” Otherwise, upgrade to a supported Linux operating system, re-install the Xilinx design tool, and then return to this step.  
**Note:** Xilinx recommends updating to the latest ISE or WebPACK software version to obtain current USB cable enhancements and fixes.
- 6.3.03i or earlier:  
Xilinx USB cables are not supported. Upgrade to a supported ISE or WebPACK software version and then return to this step.

### For Model DLC9LP, DLC9G or DLC9

For ISE or WebPACK software version:

- 9.2i or later:  
Use [Table 1-1](#) to verify that the Linux operating system installed on the host supports Xilinx USB cables. If USB cables are supported, then cable installation was completed during the ISE or WebPACK software installation and no further actions are required. Otherwise, upgrade to a supported Linux operating system and re-install the Xilinx design tool to complete the installation.
- 7.1i through 9.1.03i:  
Use [Table 1-1](#) to verify that the Linux operating system installed on the host supports Xilinx USB cables. If USB cables are supported, then proceed to “[Step 5: Install the Xilinx USB Cable.](#)” Otherwise, upgrade to a supported Linux operating system, re-install the Xilinx design tool and then return to this step.  
**Note:** Xilinx recommends updating to the latest ISE or WebPACK software version to obtain current USB cable enhancements and fixes.

- 6.3.03i or earlier:  
Xilinx USB cables are not supported. Upgrade to a supported ISE or WebPACK software version and then return to this step.

## Step 5: Install the Xilinx USB Cable

### On All Windows Operating Systems

This section provides a step-by-step procedure for installing Xilinx USB cables on all Windows hosts.

**Note:** Administrator privileges are required to perform some of the steps described in this section.

1. Disconnect all Xilinx USB cables from the host computer.
2. Download `ug344_windows.zip` from the following Xilinx website:  
<https://secure.xilinx.com/webreg/clickthrough.do?cid=100840>
3. Extract the contents of the archive. The extraction creates a folder named `install_xusb`. Open this folder and double-click on `install_xusb.bat` to start the installation.  
While the installer is running, a DOS terminal window opens and displays installation status messages. Warning messages can be safely ignored.  
**Caution!** Do not attempt to close this terminal window while the installer is running.
4. (Windows Vista only) While the installer is running, a Windows Security dialog box may appear (Figure 1-3, page 11). In this case, check the box next to **Always trust software from "Xilinx"** and then click **Install**.
5. When the installation is complete, connect the Xilinx USB cable to the desired USB port.  
(Windows XP Professional) Follow the Found New Hardware wizard when it appears (see Chapter 2, "Found New Hardware Wizard").  
(Windows Vista or Windows Professional 2000) Installation is complete and no other actions are required.

If the STATUS indicator on the cable illuminates, then the driver installation completed successfully.

### On All Linux Operating Systems

This section provides a step-by-step procedure for installing the Xilinx USB cable on all supported Linux hosts (Table 1-1, page 11).

**Note:** Root permission is required to perform the steps described in this section.

1. Disconnect all Xilinx USB cables from the host computer.
2. Open a shell or terminal console.
3. Download `install_drivers.tar.gz` from the following Xilinx website:  
<https://secure.xilinx.com/webreg/clickthrough.do?cid=103670>

4. Extract the driver script and its support files by typing:

```
tar xzvf install_drivers.tar.gz
```

The extraction creates a directory named `install_drivers` in the current directory.

5. Navigate to the `install_drivers` directory by typing:

```
cd install_drivers
```

6. Run the script by typing:

```
./install_drivers
```

7. When the installation is complete, connect the Xilinx USB cable to the desired USB port.

If the STATUS indicator on the cable illuminates, then the driver installation completed successfully.



## Found New Hardware Wizard

### Running the New Hardware Wizard (Windows XP Professional Only)

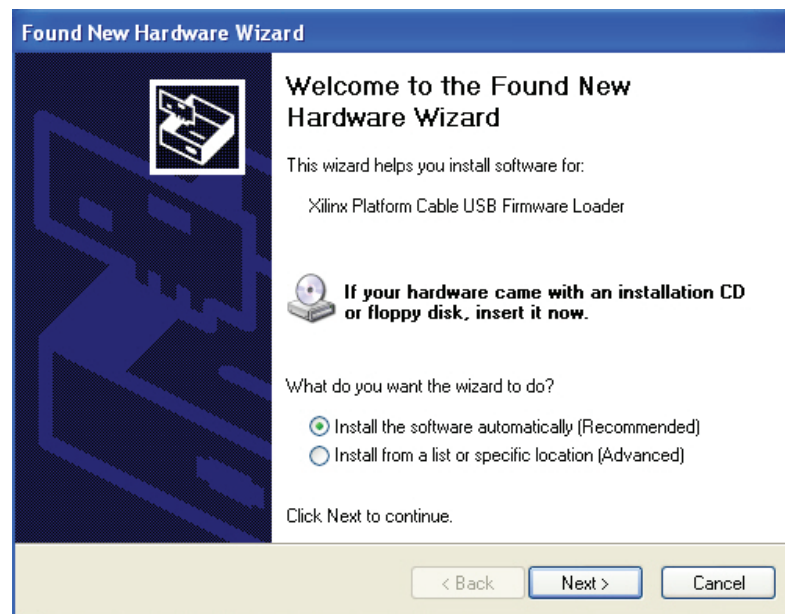
The Windows operating system recognizes a USB device through the unique combination of the device's USB vendor ID (VID) and the device's product ID (PID). Xilinx USB devices have a Xilinx-assigned VID. Similarly, the Xilinx USB cable firmware loader has an associated PID. The Xilinx USB cable firmware, however, has a PID distinct from the USB cable firmware loader. Each specific combination of a device USB VID and PID requires a corresponding device driver to be registered with the physical USB port for proper operation under the Windows operating system.

The first time a cable is attached after software installation, Windows XP Professional invokes the **Found New Hardware Wizard** and registers the device drivers:

- Once for the Xilinx USB cable firmware loader (Figure 2-1 and Figure 2-2)
- Again for the Xilinx USB cable itself (Figure 2-3 and Figure 2-4)

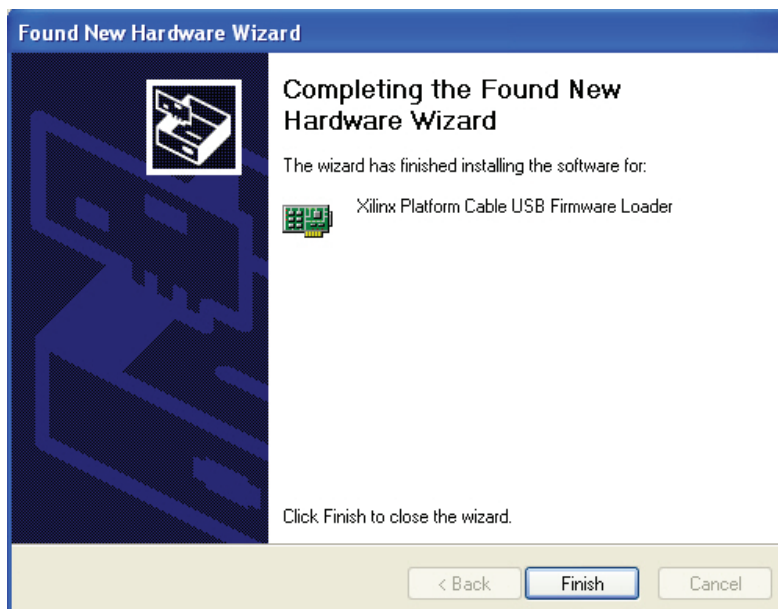
In addition, Windows XP Professional invokes the wizard each time a Xilinx USB cable is plugged into a different physical USB port for the first time, or if a different Xilinx USB cable model is plugged into a previously configured port.

**Note:** The Found New Hardware Wizard does not appear in Windows Vista and Windows 2000 Professional.



UG344\_A1\_01\_110206

Figure 2-1: Firmware Loader PID Detected



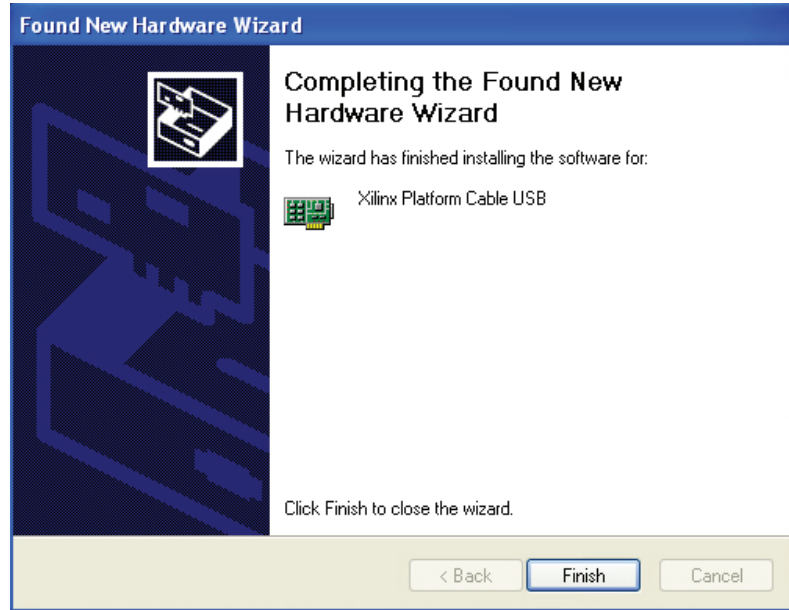
UG344\_A1\_02\_110206

Figure 2-2: Firmware Loader Driver Registered



UG344\_A1\_03\_110206

Figure 2-3: Application PID Detected



UG344\_A1\_04\_110206

Figure 2-4: Application PID Registered

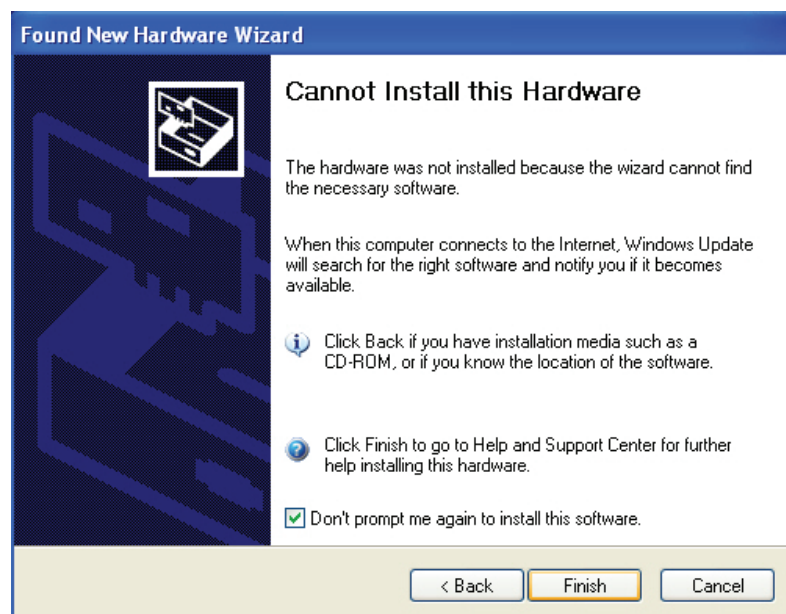


## Known Issues

### Windows Found New Hardware Messages

#### 'Wizard Cannot Install this Hardware'

After following the **Found New Hardware** wizard, the dialog box shown in [Figure A-1](#) can appear after installing a newer version of ISE™ or WebPACK™ software, or if the directory where ISE or WebPACK is installed is renamed.



UG344\_B1\_01\_110206

*Figure A-1: Cannot Install this Hardware*

To resolve this issue, follow this procedure:

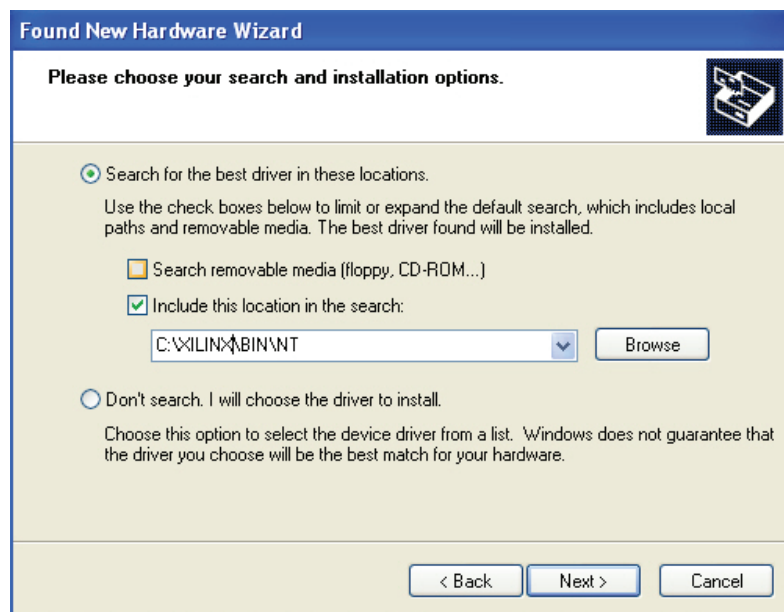
1. From the window shown in [Figure A-1](#), click **< Back**.
2. When the window switches to the one shown in [Figure A-2](#), select the **Install from a list or specific location (Advanced)** radio button and then click **Next >**.



UG344\_B1\_02\_110206

Figure A-2: Install Software from a Specific Location

- When the window switches to the one shown in Figure A-3, click on the check box next to **Include this location in the search** and enter the path to the ISE or WebPACK installation directory. Then click **Next >**.



UG344\_B1\_03\_110206

Figure A-3: Pointing the Wizard to the ISE or WebPACK Installation Directory

**Note:** The directory `c:\xilinx\bin\nt` is the default installation path. If an environment variable is used to establish a different installation location using the `%XILINX%` alias, point the wizard to the location defined by `%XILINX%\bin\nt`.

4. After a short file transfer, the wizard should indicate successful installation of the Xilinx Platform Cable USB Firmware Loader (Figure A-4). The "Xilinx Platform Cable USB" text can differ depending on USB cable type.

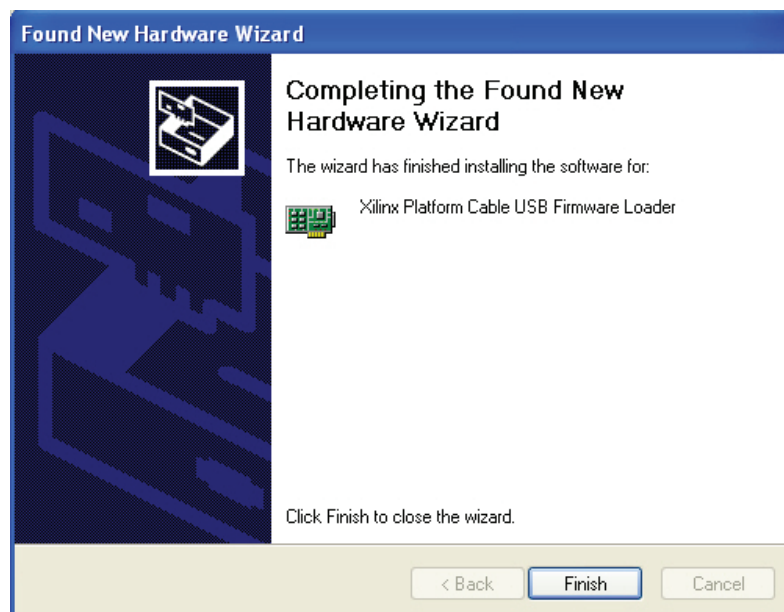


Figure A-4: Found New Hardware Wizard Completes

5. Proceed to the next iteration of the **Found New Hardware** wizard and then complete the installation.

